

IBL lighting UK

Synergy Choice

New

range of economical, high performance, compact fluorescent downlights



Synergy Choice



C3073.10



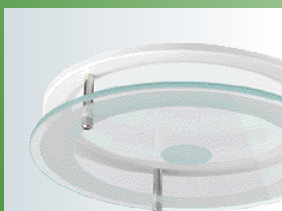
Tri-Wing Fixing



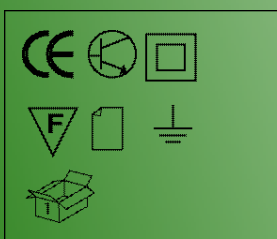
Faceted Reflector



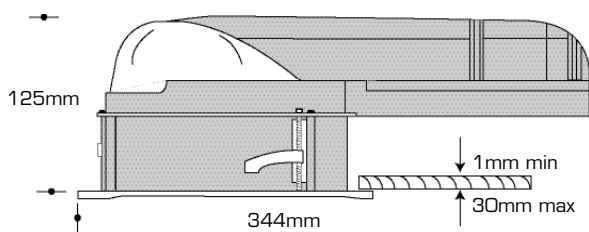
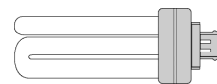
3167.10



3166.10



- Low energy downlighter
- Various attachments
- Tri-wing fixing
- Loop-in loop-out terminations
- Specular metalised aluminium reflector
- Faceted metalised aluminium reflector option
- Integral HF ballast
- Flicker free
- Extensive range



ø185mm

148mm

Wattage

Lamp Type

Part Code	Part Code	Standard	Emergency
1 x 13W	TC-DE	C3070.10	C9070.10
1 x 18W	TC-DE	C3071.10	C9071.10
1 x 18W	TC-TE	C3072.10	C9072.10
1 x 26W	TC-TE	C3073.10	C9073.10
1 x 32W	TC-TE	C3074.10	C9074.10
1 x 42W	TC-TE	C3069.10	C9069.10
2 x 13W	TC-DE	C3075.10	C9075.10
2 x 18W	TC-DE	C3076.10	C9076.10
2 x 18W	TC-TE	C3077.10	C9077.10
2 x 26W	TC-TE	C3078.10	C9078.10

Supplied with White ABS bezel and specular reflector as standard for faceted reflectors add 9 to the suffix ie; C3078.19

Attachments

Part Code

ABS bezel	3160.10
Die cast bezel	3161.**
Floating glass etched centre	3166.**
Floating glass centre hole	3167.**
Floating glass large etched centre	3168.**
IP44 sealed bezel with clear glass	3163.**
IP44 sealed bezel with frosted glass	3164.**
IP65 sealed tamper proof bezel polycarbonate lens	C3200.**
Cat II Louvre attachment	3158.00

IP65 bezels are factory fitted and must be ordered with the luminaire

suffix guide to finishes

.10 White □ .20 Black ■ .30 Brass ■■ .40 Chrome ■■■ .90 Satin Chrome ■■■■

Synergy Choice

Electrical Specification

Input voltage	230-240Vac 50/60Hz	
Input current	1x13W = 0.075A	2x13W = 0.15A
	1x18W = 0.09A	2x18W = 0.18A
	1x26W = 0.12A	2x26W = 0.24A
	1x32W = 0.14A	1x42W = 0.18A
Power factor	>0.95	
Circuit loss	<5%	
Lamp frequency	35KHz	
Electrical protection	Class I	
Lamp type	Compact fluorescent 4 pin lamps	
Ballast protection	Auto-shutdown with defective lamp	
Electrical connection	screwless terminations	
Ingress protection	IP20, IP44 or IP65	

Mechanical Specification

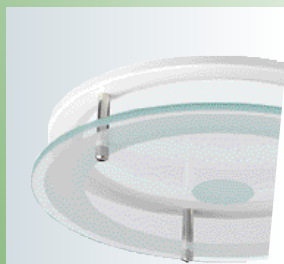
luminaire	injection moulded polycarbonate
Reflector	metallised aluminium
Light distribution	asymmetrical
Bezel standard	white ABS plastic
Bezel painted finish	polyester powder coated die-cast
Bezel metallic finish	lacquered die-cast
Gear housing	self extinguishing polycarbonate
Luminaire fixing	tri-wing fixing method
Ceiling thickness	1 - 30mm

Compliance

CE Mark	Conforms to Low Voltage & EMC Directive
Safety	BS EN 61347 BS EN 60598
Immunity	BS EN 61547
Emmision	BS EN 55015
	BS EN 61000-3-2



IP44 bezel



3166.10



3158.10



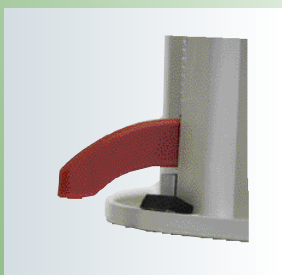
C3100.10



Synergy Choice - Dimming



C3172.10

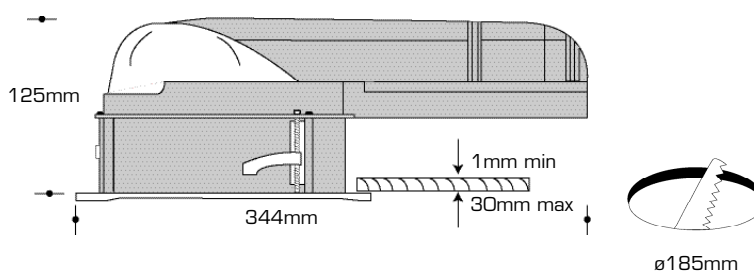
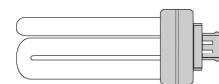


Tri-Wing Fixing



Faceted Reflector

- 1-10V DC control
- Smooth dimming cycle 5-100%
- Pre-heat at all levels
- Flicker free
- Tri-wing fixing
- Loop-in loop-out terminations
- Specular metalised aluminium reflector
- Faceted metalised aluminium reflector option
- Various attachments
- 18 & 26, single and twin lamp 32 & 42W single lamp versions



Wattage	Lamp Type	Part Code Dimming	Part Code Dim/Em
1 x 18W	TC-TE	C3172.10	C9172.10
1 x 26W	TC-TE	C3173.10	C9173.10
1 x 32W	TC-TE	C3174.10	C9174.10
1 x 42W	TC-TE	C3169.10	C9169.10
2 x 18W	TC-TE	C3177.10	C9177.10
2 x 26W	TC-TE	C3178.10	C9178.10

Supplied with White ABS bezel and specular reflector as standard for faceted reflectors add 9 to the suffix ie; C3172.19

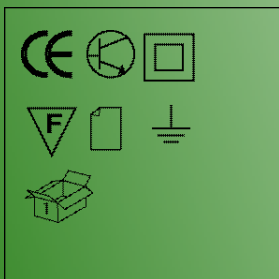
Attachments	Part Code
ABS bezel replacement	3160.10
Die cast bezel	3161.**
Floating glass etched centre	3166.**
Floating glass centre hole	3167.**
Floating glass large etched centre	3168.**
IP44 sealed bezel with clear glass	3163.**
IP44 sealed bezel with frosted glass	3164.**
IP65 sealed bezel polycarbonate lens tamper proof	C3200.**

Cat II Louvre attachment 3158.00

IP65 bezels are factory fitted and must be ordered with the luminaire

suffix guide to finishes

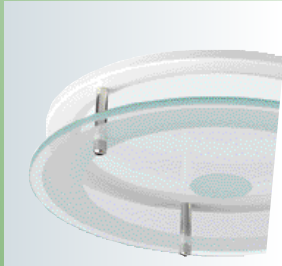
.10 White □ .20 Black ■ .30 Brass ■ .40 Chrome ▨ .90 Satin Chrome ■



Synergy Choice - Dimming



3164.10



3166.10



3158.00

Electrical Specification

Input voltage	230-240Vac 50/60Hz (198 - 264 Vac) Uni Volt	
Input current	1x18W = 0.09A	2x18W = 0.18A
	1x26W = 0.12A	2x26W = 0.24A
	1x32W = 0.14A	1x42W = 0.18A
Power factor	>0.95	
Circuit loss	<5%	
Lamp frequency	35KHz	
Electrical protection	Class I	
Lamp type	Compact fluorescent 4 pin lamps	
Ballast protection	Auto-shutdown with defective lamp	
Electrical connection	screwless terminations	
Ingress protection	IP20, IP44 or IP65	

Mechanical Specification

Luminaire	injection moulded polycarbonate
Reflector	metalised specular aluminium
Bezel standard	white ABS plastic
Bezel painted finish	polyester powder coated die-cast
Bezel metallic finish	lacquered die-cast
Gear housing	self extinguishing polycarbonate
Luminaire fixing	tri-wing fixing method
Ceiling thickness	1 - 30mm

Compliance

CE Mark	Conforms to Low Voltage & EMC Directives
Safety	BS EN 61347 BS EN 60598
Immunity	BS EN 61547
Emmission	BS EN 55015 BS EN 61000-3-2
1-10V DC control	EN 60929



10 YEAR
PRODUCT
GUARANTEE



lighting UK

CE Mark

Conformance to Low Voltage & EMC Directives

Safety
Immunity
Emmision

BS EN 61347 BS EN 60598
BS EN 61547
BS EN 55015
BS EN 61000-3-2



Intram Barwell Limited is constantly developing its products. All descriptions, illustrations, drawings and specifications in this publication present only general particulars and shall not form part of any contract. The right is reserved to change specifications without prior notification or public announcement. All goods supplied by the company are supplied subject to the company's General Conditions of Sale, a copy of which is available form the website.

Intram Barwell Ltd
Unit C60 Barwell Business Park, Leatherhead Road,
Chessington, Surrey. KT9 2NY.

t. +44 (0) 20 8391 7500
e. info@ibl.co.uk

f. +44 (0) 20 8391 1629
web. www.ibl.co.uk