

Modern indoor projector, for high quality LED light sources.

TECHNICAL DATA	Mounting: in 3-phase track Body: die-cast aluminum
ELECTRICAL DATA	Colour: black and white, white, black Power supply efficiency: >88% Power: 220-240V 50/60Hz Includes light source: yes Type of equipment: ED Electrical connection: in 3-phase track
OPTICAL DATA	Light distribution: circular Way of lighting: direct Reflector: aluminum polished faceted
ADDITIONAL INFO	Operating temperature range: 0° C ... +35° C Lifetime (L70B10): 50 000 h Glow Wire Test:
GENERAL DATA	Warranty: 3 years + 2 years after project registration Application: boutiques, delicatessen, jeweler, shopping centers, supermarkets, museums

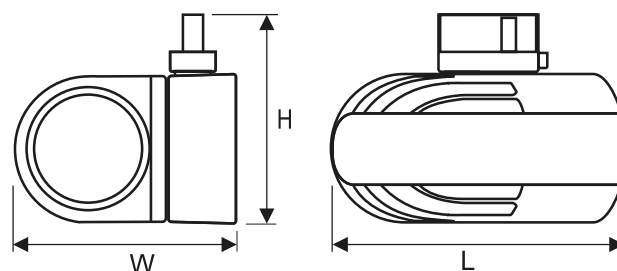


Code	Beam angle	Power LED [W]	Luminaire power [W]	Lumen LED [lm]	Lumen luminaire [lm]	Efficacy [lm/W]	Colour temperature [K]	CRI/Ra
02014X.5L01.03	22°	27	30	3550	2750	92	3000	≥80
02014X.5L02.03	22°	27	30	3650	2850	95	4000	≥80
02014X.5L01.04	32°	27	30	3550	2900	97	3000	≥80
02014X.5L02.04	32°	27	30	3650	3000	100	4000	≥80
02014X.5L01.05	42°	27	30	3550	2700	90	3000	≥80
02014X.5L02.05	42°	27	30	3650	2750	92	4000	≥80
02014X.5L03.03	22°	46	52	5200	4000	77	3000	≥80
02014X.5L04.03	22°	46	52	5500	4200	81	4000	≥80
02014X.5L03.04	32°	46	52	5200	4000	77	3000	≥80
02014X.5L04.04	32°	46	52	5500	4200	81	4000	≥80
02014X.5L03.05	42°	46	52	5200	4000	77	3000	≥80
02014X.5L04.05	42°	46	52	5500	4300	83	4000	≥80

02014 .5L01.03

- Colour
- 0 white-black
 - 1 white
 - 3 black

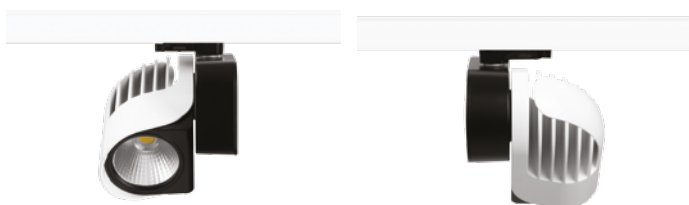
Code	Dimensions [mm] L W H	Pallet quantity	Quantity in package	Net weight [kg]
02014X.5L01.03	206 159 146	175	1	2.3
02014X.5L02.03	206 159 146	175	1	2.3
02014X.5L01.04	206 159 146	175	1	2.3
02014X.5L02.04	206 159 146	175	1	2.3
02014X.5L01.05	206 159 146	175	1	2.3
02014X.5L02.05	206 159 146	175	1	2.3
02014X.5L03.03	206 159 146	175	1	2.3
02014X.5L04.03	206 159 146	175	1	2.3
02014X.5L03.04	206 159 146	175	1	2.3



Luminous flux tolerance +/- 10%.

Code	Dimensions [mm] L W H	Pallet quantity	Quantity in package	Net weight [kg]
02014X.5L04.04	206 159 146	175	1	2.3
02014X.5L03.05	206 159 146	175	1	2.3
02014X.5L04.05	206 159 146	175	1	2.3

OTHER PICTURES



ACCESSORIES



- 150091.00121
- 150092.00122
- 150093.00123

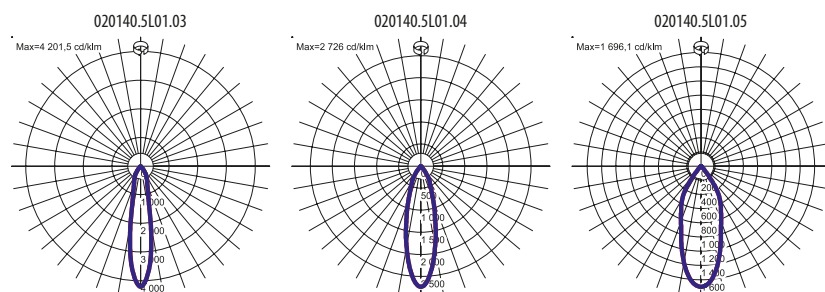
Mounting bases



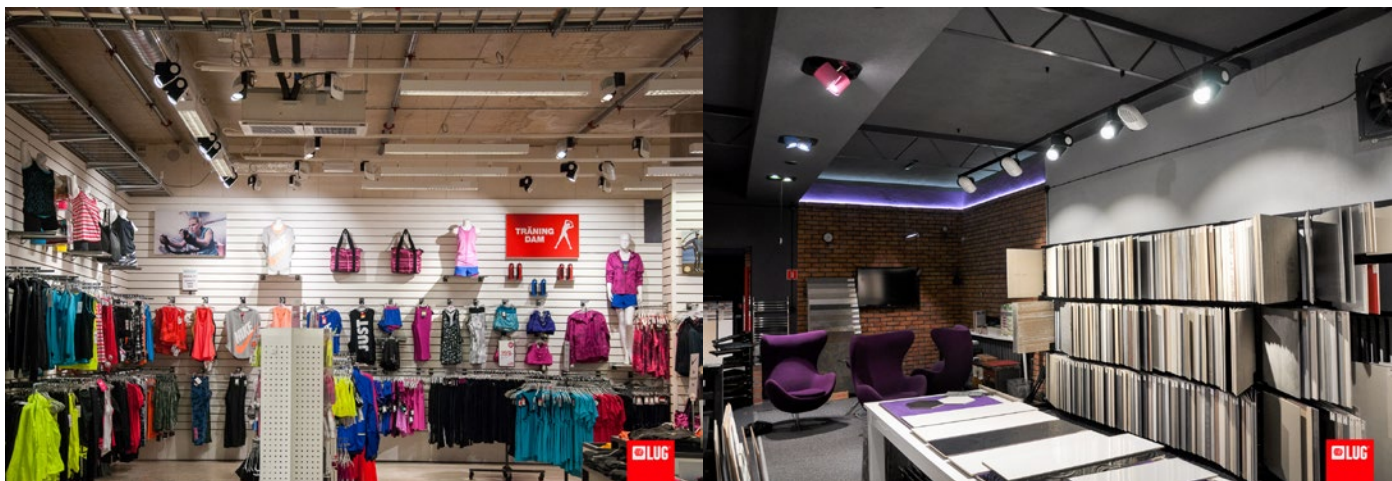
- 150091.00124
- 150092.00125
- 150093.00126

Recessed box

LIGHT BEAM CURVES



Luminous flux tolerance +/- 10%.

OTHER PROJECTS

TEAM SPORTIA sports shopping, Jönköping, Sweden

PRO-Interior showroom, Poznan, Poland